

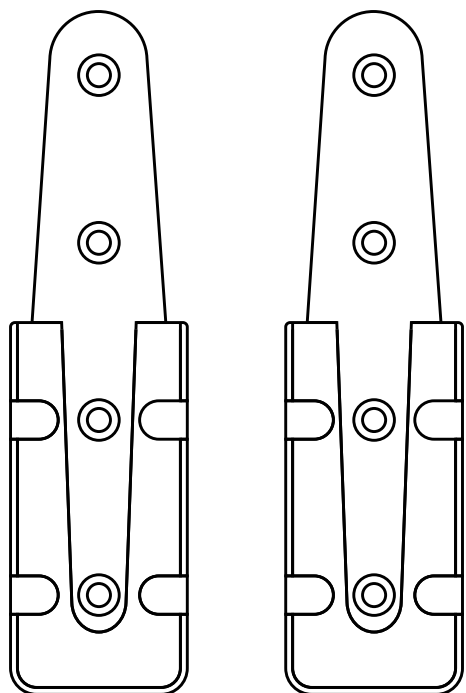
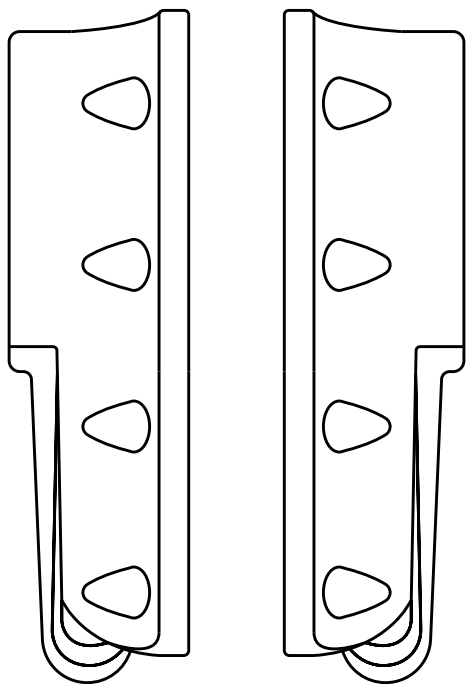


CLOCKWORK
COMPONENTS

FIX515

Plastic corner bed bracket set:

1pc left, 1pc right + 2 connectors




Oct 2023



CLOCKWORK
COMPONENTS

CLOCKWORK COMPONENTS LTD.
T : 01993 775 767 F : 01993 892 313 E: sales@clockworkcomponents.com
www.clockworkcomponents.com

All images, photos, text and designs are protected by copyright and may be subject to additional Design Right Protection


NO	321	FIX515 BED BRACKET TEST RESULT	 CLOCKWORK COMPONENTS
Page	1 / 3		

Requesting the Test : Design Center
 Test Request Date : 28.10.2022
 Sample Code : 102-08-61/102-08-66-301
 Sample Definition : BEDSET Slide fixing
 Test Date : 02.11.2022
 Applied Standart : Comparison
 Experiment Type : Compression Test

COMPRESSION TEST IMAGE



Figure 1. Compression test of chipboard module combined with Bedset Slide fixing apparatus.

NO	321	FIX515 BED BRACKET TEST RESULT	 CLOCKWORK COMPONENTS
Page	2 / 3		

EXPLANATION

The apparatus used in the compression test and the test sample connection type are given in Figure 1. BEDSET slide fixing apparatus is fixed on the module with 8 chipboard screws. The holes on the metal test apparatus are opened by aligning them on the module. The holes drilled on the module and the holes on the metal test apparatus were aligned and assembled with 2 fixing adjustment screws and washers. The metal apparatus connected to the module is positioned on the lower apparatus of the testing device with a specially prepared profile and 2 screws. After the positioning process, a metal apparatus module is fixed to the top of the test device with 1 screw in a perpendicular position to the surface to be printed. After the placement on the test device was completed, a metal profile measuring 100x30x20 was placed between the chipboard surface and the metal apparatus mounted on the top of the test device in order to prevent the chipboard surface from being damaged during the testing process. As a result of the test, a compression test was performed at a speed of 3 mm/minute and it was determined that the maximum weight of the chipboard module combined with the BEDSET slide fixing apparatus could carry.

TEST CHART

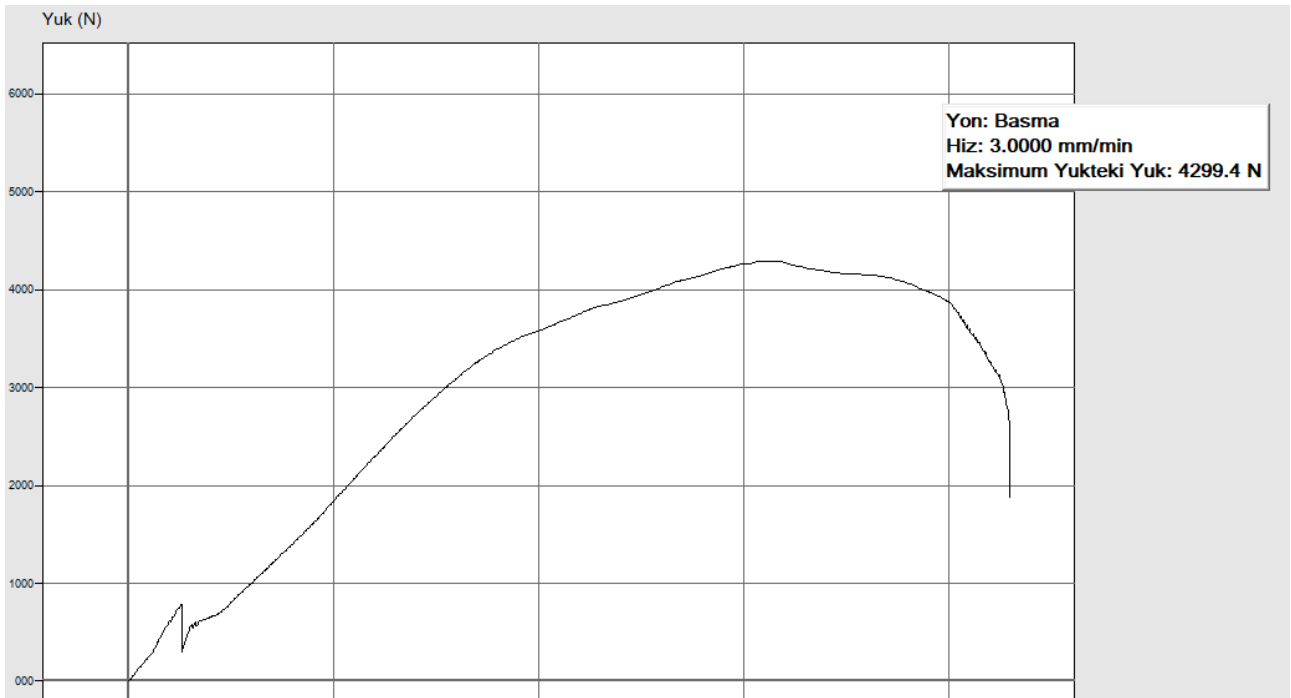



Figure 2. Tensile strength - elongation diagram of chipboard module assembled with BEDSET

IMAGES AFTER TEST

NO	321	FIX515 BED BRACKET TEST RESULT	 CLOCKWORK COMPONENTS
Page	3 / 3		

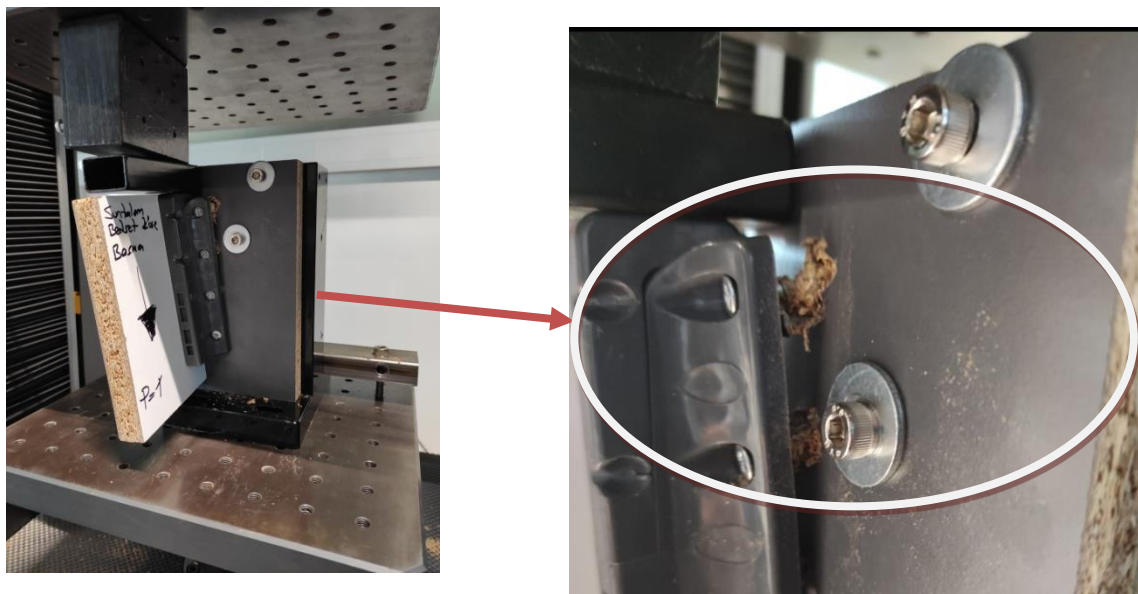


Figure 3. Separation surface of the result of the chipboard module combined with the BEDSET slide fixing apparatus.

CONCLUSION AND THOUGHTS

In the compression test of the BEDSET slide corner fixing apparatus connected on the chipboard module, max. The compressive strength value was determined as 430 kg. The deformation resulting from the test occurred as a result of the explosion of the chipboard module.
